

A photograph of two hands, one from a darker-skinned person and one from a lighter-skinned person, reaching towards each other to form a circle. The background is a clear, warm-toned sky at sunset or sunrise, with golden grass in the foreground. The overall mood is hopeful and collaborative.

Frames Renewable Energy Solutions



FRAMES
a family of oil & gas solutions

Introduction



Nick ten Asbroek
(MSc.)

Sales Manager FRES

N.ten.Asbroek@frames-group.com

<http://www.frames-group.com/Products/Biogas>

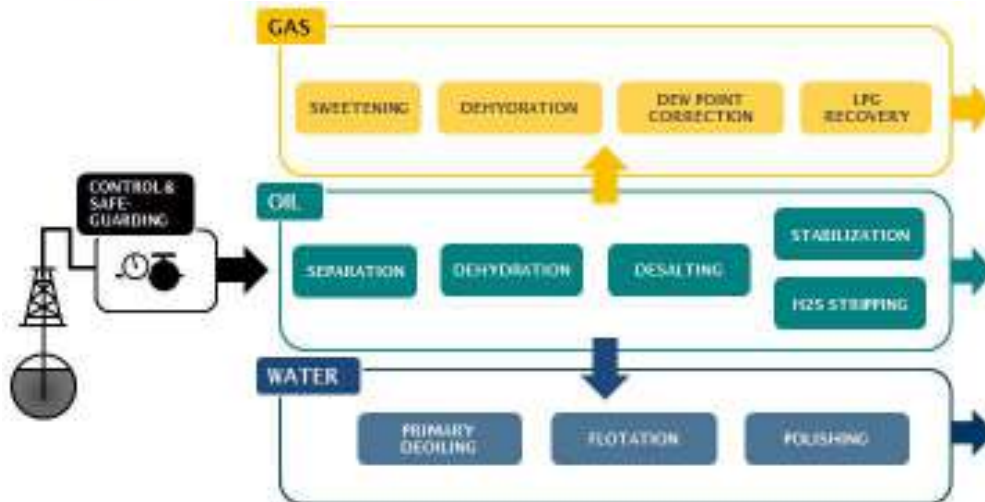
World

About Frames



-  Office location
-  Project execution
-  Engineering
-  Fabrication

Upstream from Well to Pipeline



Packages with process & Mechanical guarantee



Frames Renewable Energy Solutions

Renewable gas & CCU



The Future is Green

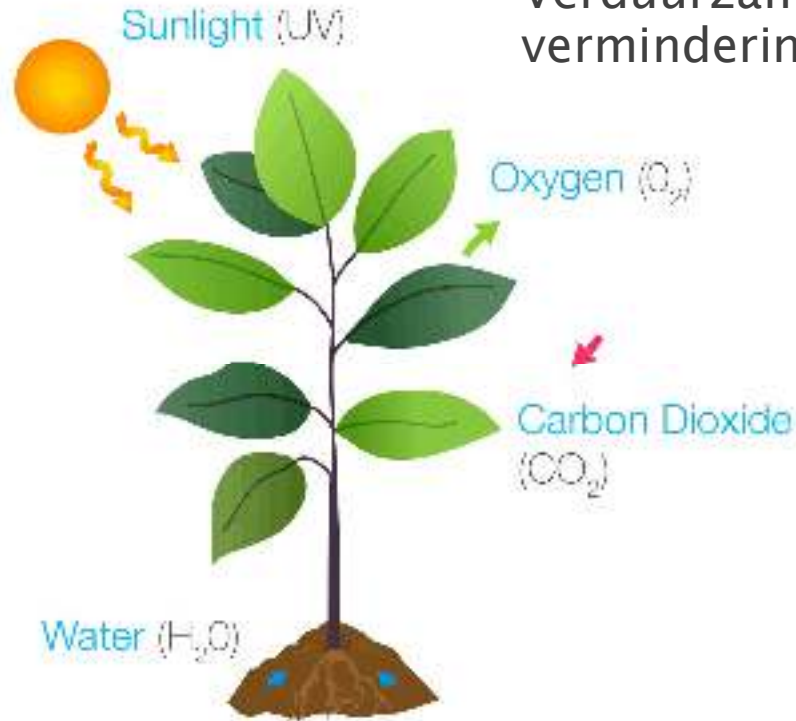
Frames Renewable Energy Solutions

- CO₂ afvang en hergebruik & Duurzaam gas opwaardering



CO₂ uit de rookgassen van biomassa verbranding?

- Fotosynthese -> CO₂!
- CO₂ bemesting zorgt voor extra groei.
- Warmte voor de tuinbouwkassen
- Verduurzaming glastuinbouwsector door vermindering aardgasgebruik



De huidige situatie?

- Warmte en CO₂ uit aardgas in voorjaar en najaar.:
 - Gas WKK
 - Gas ketel
- Vloeibare CO₂ aanvulling in de zomer
- Of wanneer aanwezig OCAP CO₂



De nieuwe situatie!

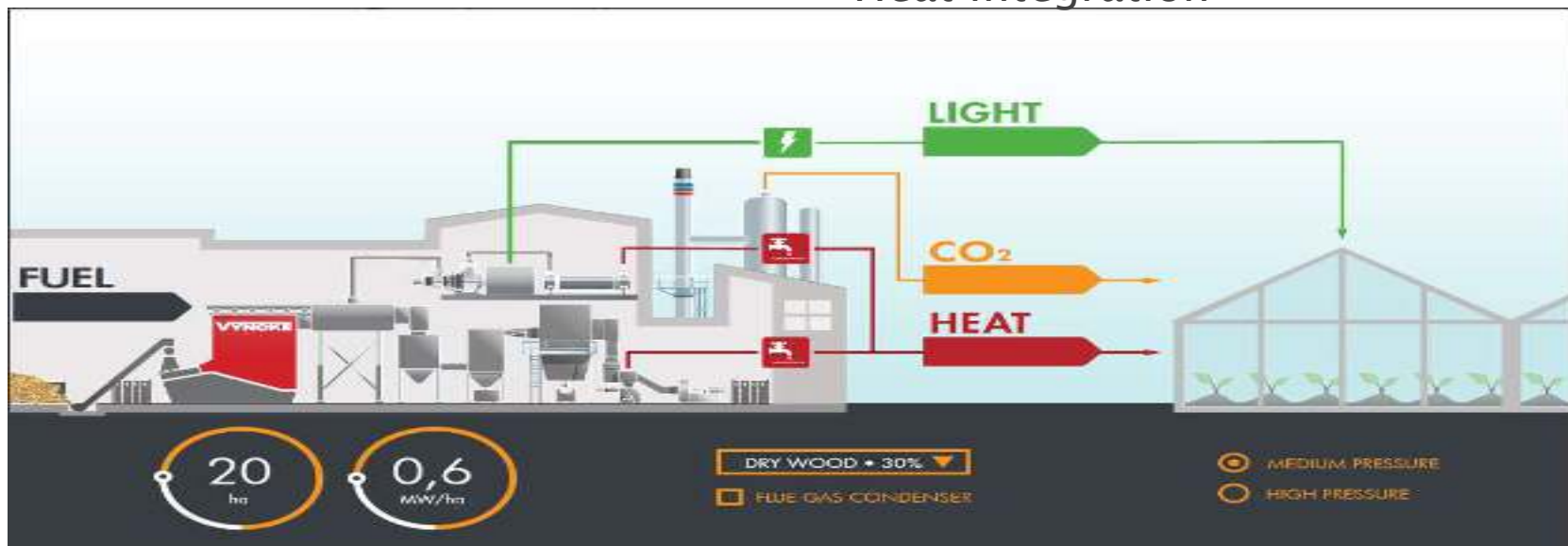


Biomassa Boiler (7-20 MWht)

- Wood Chips
- 140°C pressure boiler

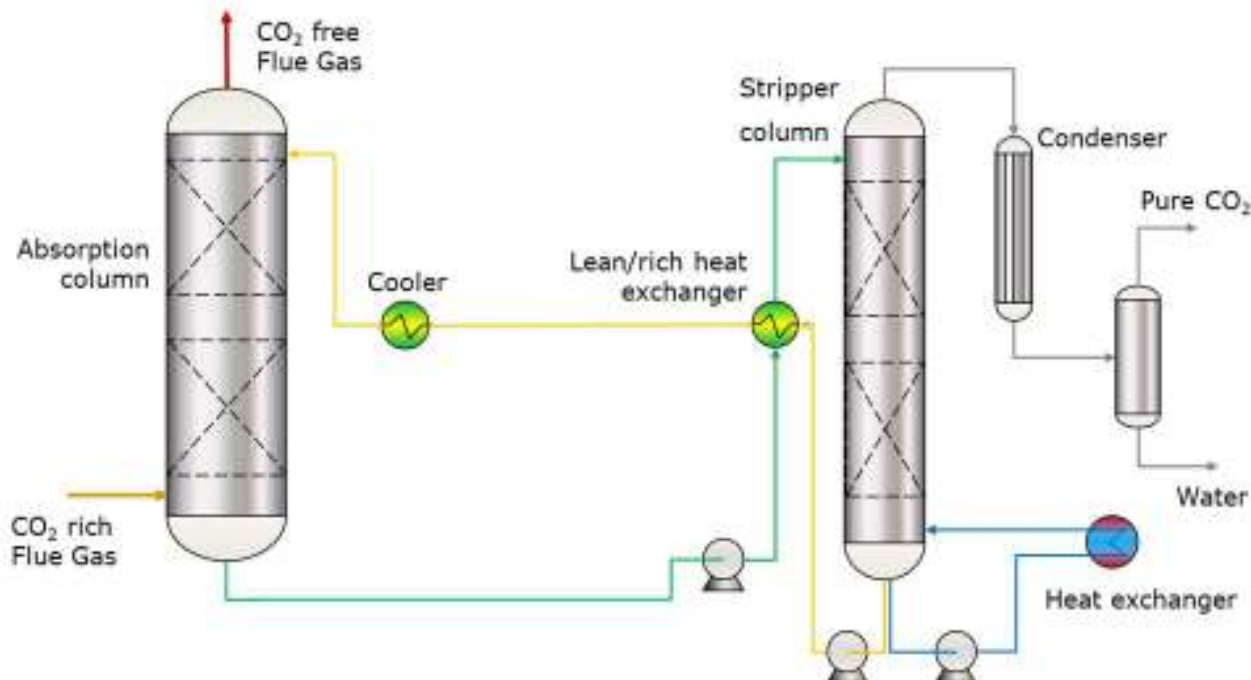
CO₂-capture, polishing and storage

- CO₂-absorption Galloxol®
2,2 – 5 ton per hour
- Heat integration

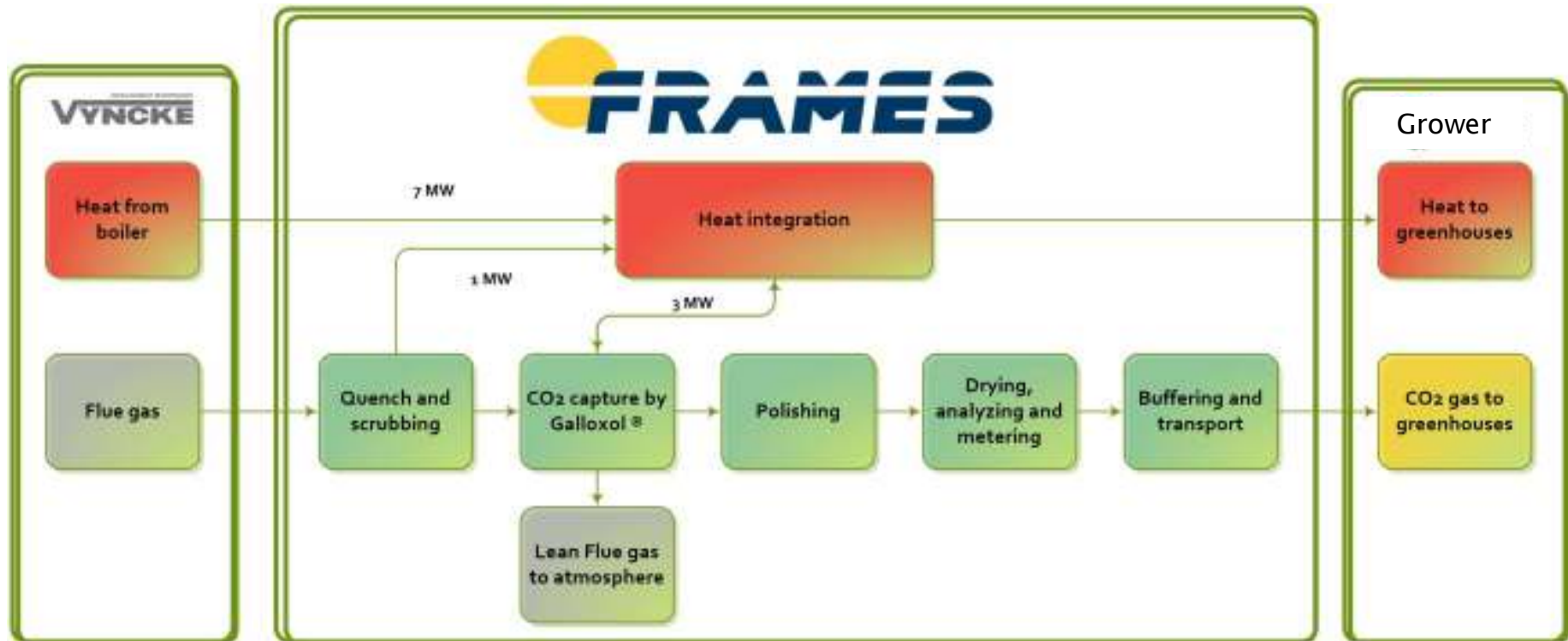


Frames Galloxol® CO₂-afvanginstallatie

- Niet vluchtig CO₂ absorptie vloeistof
- Hoog CO₂-afvangsrendement zelfs bij lage CO₂ concentratie
- Thermisch gedreven proces
- Volledige integratie van de CO₂-afvang en biomassaketel
- Standaard oplossing voor de tuinbouw, klant specifieke ontwerpen mogelijk



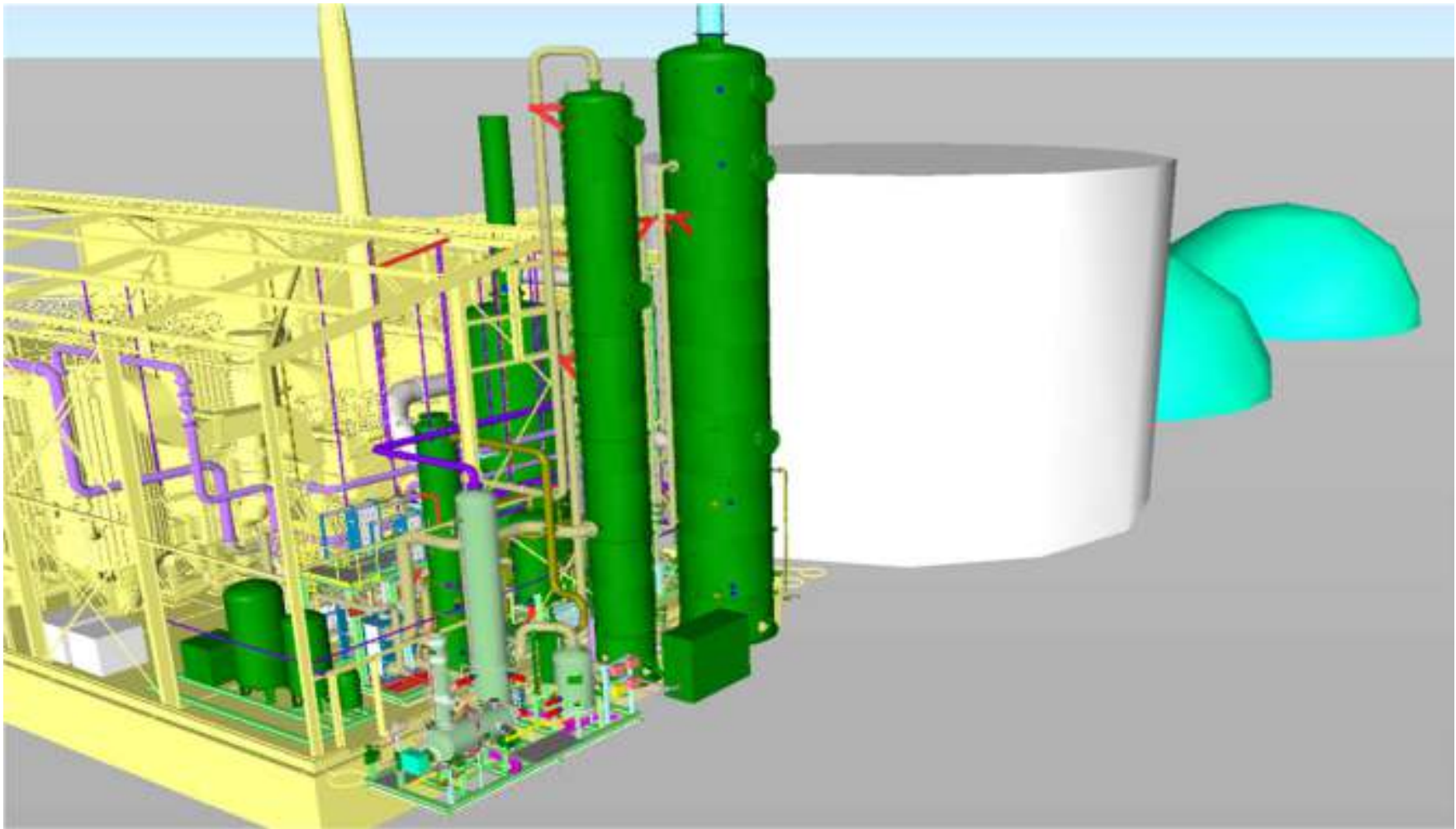
Het CO₂-afvangproces en warmte integratie



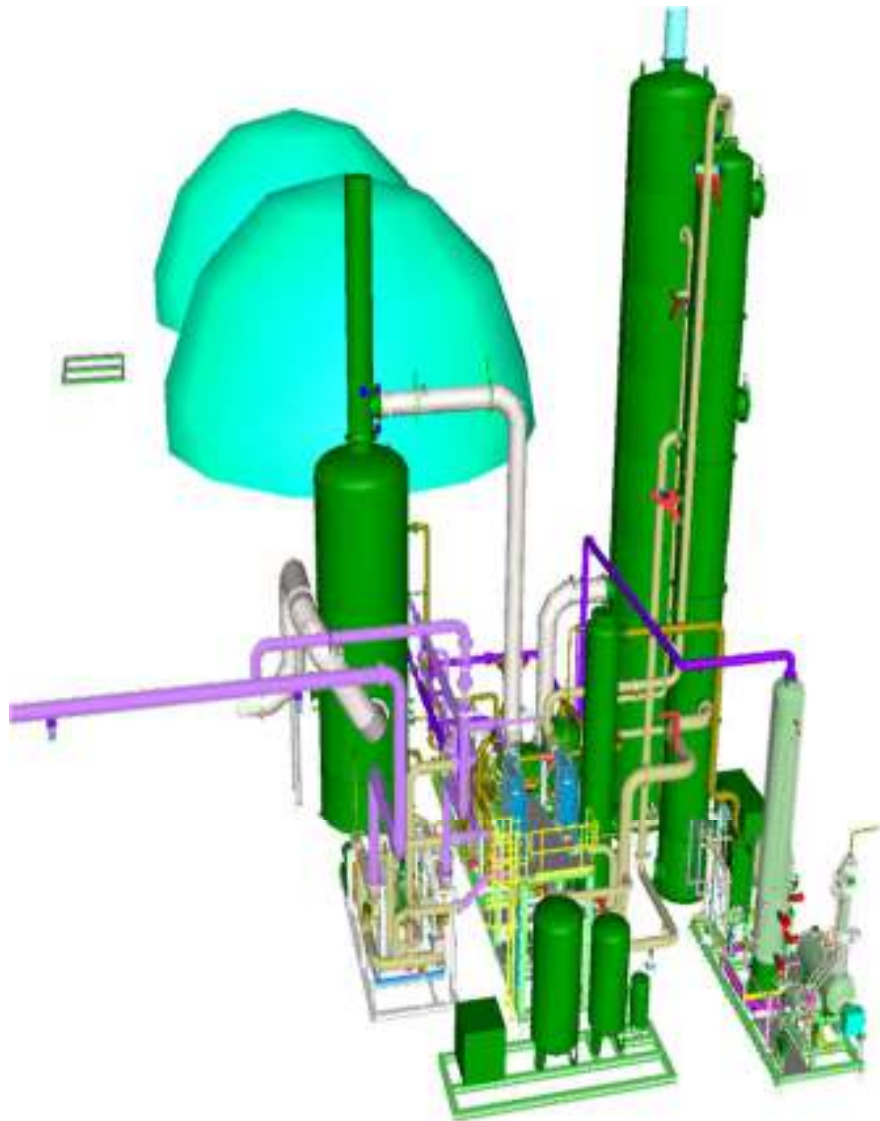
Overview CO₂-capture project



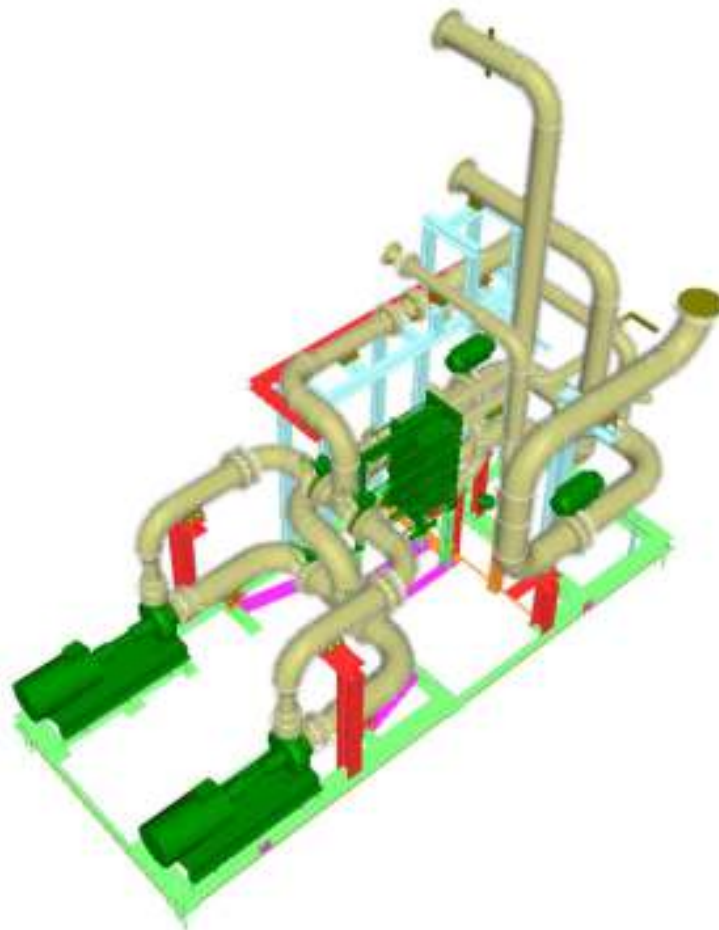
CO₂-afvang uit rookgassen van de glastuinbouw



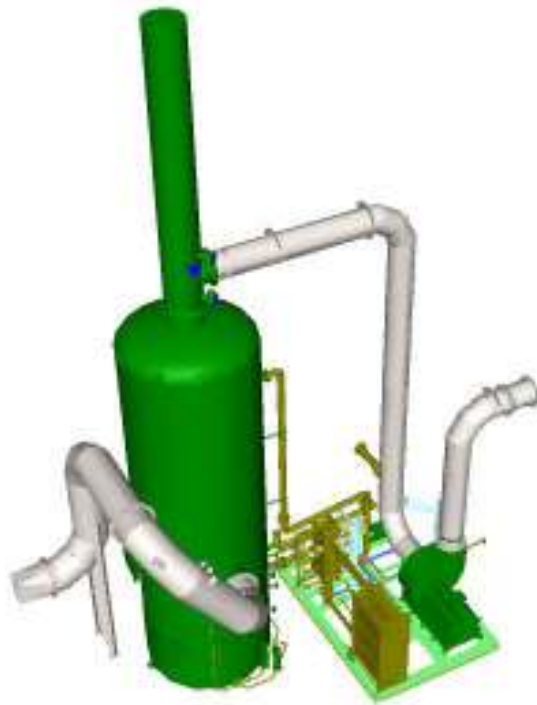
Overview



Warmte integratie



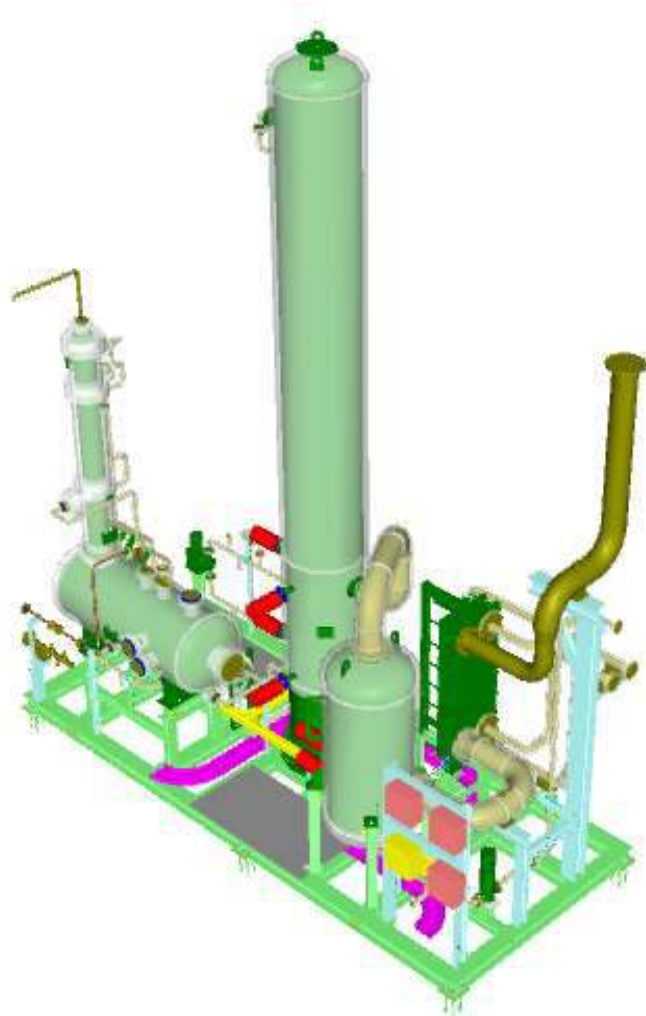
Rookgas koeler/condensor en blower



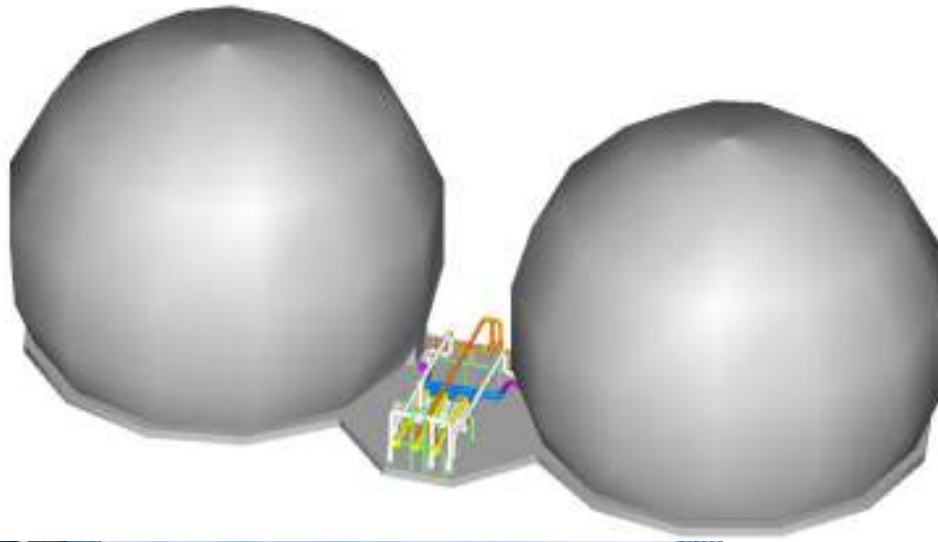
CO₂ capture system



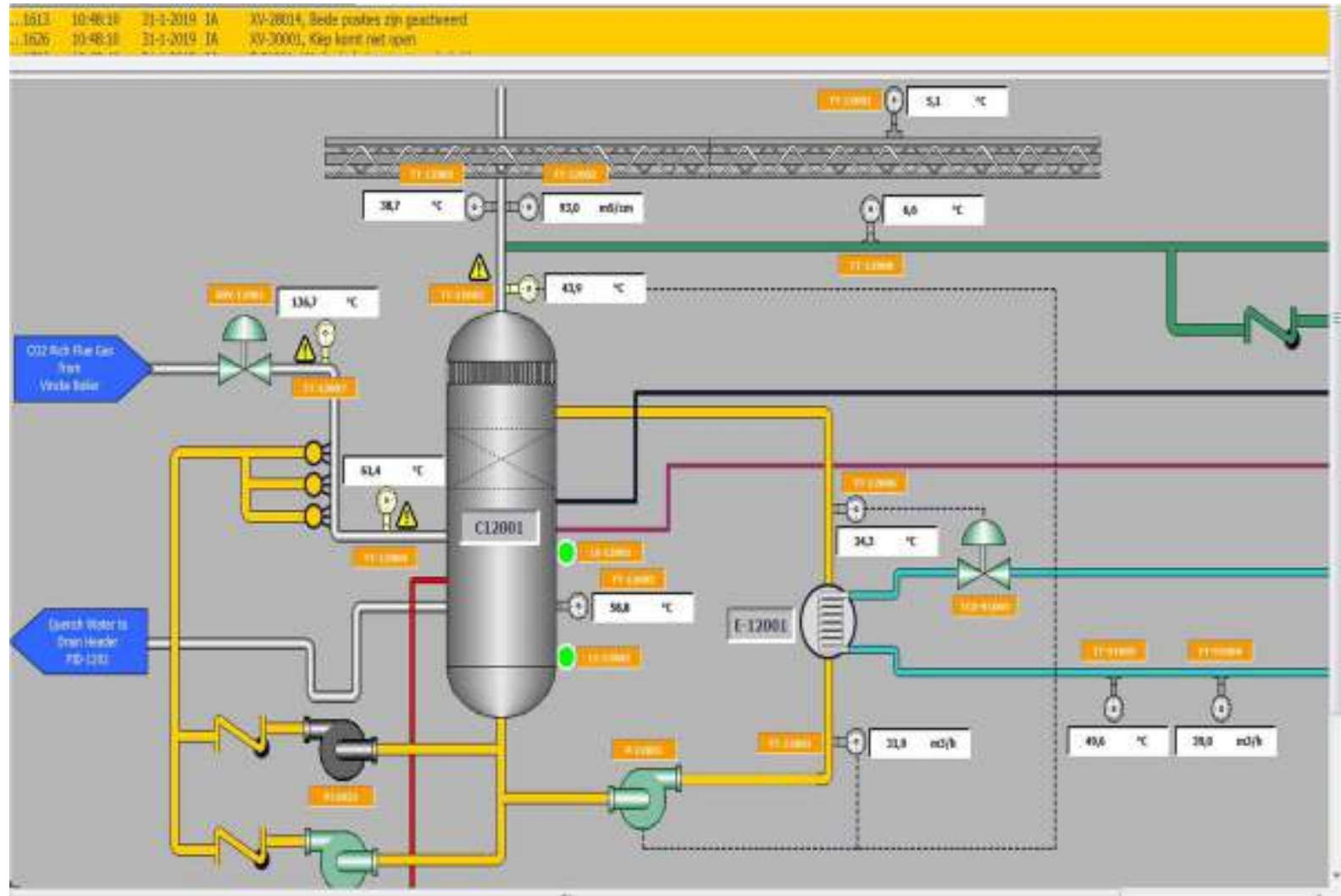
CO₂ drying



Buffering & transport



Remote monitoring & control





DES



Overview



A close-up photograph of two hands, one from a darker-skinned person and one from a lighter-skinned person, positioned to form a heart shape. The background is a blurred outdoor scene with a body of water and greenery under a clear blue sky.

Voor vragen ben ik ook
beschikbaar in de banner
presentatieruimte!

**Thank you for
your time!**

**FRAMES**
a family of oil & gas solutions